



South Metro Woodturners Newnan, GA



Chapter 215 of the American Association of Woodturners

<http://www.southmetrowoodturners.org>

June 20, 2017

Editor: Mike Raftis mikeraftis@yahoo.com

President's Message

Hello all,

Another successful BBQ fundraiser is in the books. We sold about 140 butts and netted around \$2500 profit. I thank everyone who helped by selling, cooking, rubbing, cleaning, splitting and sweating. It is certainly a long day! Thanks to all.

Next on the agenda is the Labor day "Art on the Square" in Newnan. The club will have a stall and do demos, turn pens etc. All SMWT members are eligible to rent a space and sell their goods. Get a booth or team up with a buddy to cut down on the overhead. John Von has applications and you can apply at The Corner Art Gallery in Newnan on South Courthouse Square Street.

The Outdoor Day event at Chic-fil-A's Rock Ranch is on Saturday Oct 14. We are on track with the organizers and they are excited about us being there. Let's not disappoint! Please make this a priority on your schedule. This

is a great opportunity for our club to represent.

The Georgia National Fair-October 5-15th is another opportunity to expose your talents to the world.

We are working to improve our demonstrations by adding dust control, better lighting and some additional monitors in the back.

As always if anyone has any ideas, questions, concerns or criticism feel free to speak up. We should always be looking to improve our club's quality and its appeal to our membership.

See Y'all next time,

Wayne

Meeting Notes

Sorry folks, but no meeting notes this month. Somehow at the end of the meeting my notebook made the transition to an alternate universe, so I have no notes, and since I already pretty much have no

memory...

Next Meeting

- Our next meeting will be **July 18, 2017** at John Beatty's shop.
- Demonstrator for July: **James McClure**
- If you have an interest in a particular demonstration topic, or you have a skill or special technique you could share with the club contact **Wayne Morris**. Members will be compensated \$50 for demonstrating.

Newsletter Contents

- [Links](#)
- [Schools](#)
- [resources](#)
- [Demonstrator](#)
- [Demonstration Library](#)
- [Demonstrator Schedule](#)
- [Items for Sale](#)

Use the newsletter to communicate with your fellow members

Share your shop photos, 'sale' items, tool tips or anything else you would like to with our club members.

Members Work for June



Spalted magnolia bowl by **George Daughtry**



Hickory bowl by **George Daughtry**



Small lidded hickory bowl by **George Daughtry**.



Here are a few memories from the preparation for the BBQ. The wood splitting was at George Blankenship's house. George Blankenship, Wayne Morris, Mike Raftis, Hanley Lewis, John Von, Ron Britton, and George Daughtry attending.



And a couple of pics from the sale...

Note that some of the guys worked *really* long hours.

Apologies to those who I didn't get photos of, including all those who worked the back side of the clock. Special thanks to **Don Heath** and **Mel Salzman** who worked double shifts.





Demonstrator for June: Pat Oliphant



Pat gave us a demonstration of carving logs into animal forms such as bears and owls using a chainsaw. In this demo Pat did a bear and an owl.

This carving can be done with either an electric or gas powered saw. For this demo, which was indoors on account of the weather, Pat used a small electric saw. With the electric saw, Pat uses a 'fast charger.' This will charge a battery while another battery is doing the sawing. The chaps are also recommended for this work.

The chain saw is used for all of the roughing work and some of the detail work. He also used an angle grinder for some detail work, a power sander, and a drill for the eyes. The 'jaw horse' which is used for holding the carvings is something that is available from Lowe's.

The carvings can be done on various size logs, and take a few hours to complete. Some are dyed dark, others left natural.

Typical charge for a completed carving is around \$100 per foot of height.

The carver may use bars on the saw with varying diameters on the end in order to facilitate different levels of detail.

Pat works from the top down, doing a section (head, body, arms, feet) at a time. For the demo, Pat started from scratch, carving the head, then switched to a roughed out bear to demo the finishing techniques.



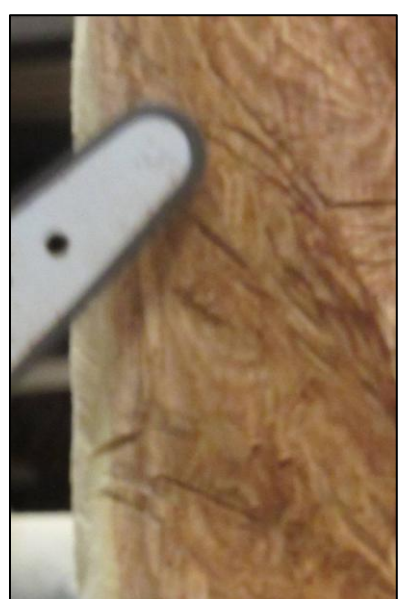






The nose job was done with a torch.

Now for the finishing on the previously roughed-out bear. This work is done mostly with the angle grinder, and a little more chainsaw work. The angle grinder can be used to add additional finer details, and smoothing of the rough surface.





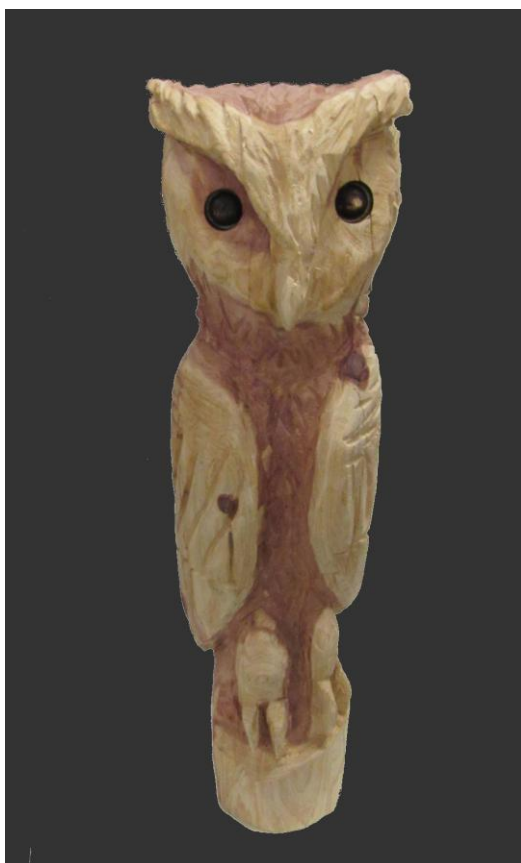
Ready for finishing!

In the remaining time Pat roughed out an owl, which is another of his favorite projects. This smaller project worked well on the 'Jawhorse.'





Here are a few examples of Pat's work.







SMW DEMONSTRATION LIBRARY

- #1 February 2005 – Turning a Lidded Box – Frank Bowers
- #2 March 2005 – Use of Turning Tools – Hal Simmons
- #3 May 2005 – Marquette's (miniatures) – Phil Colson
- #4 June 2005 – End Grain Turning – Mark Sillay
- #5 July 2005 – Ebonizing and Metal Leafing – Don Davis and Phil Piotrowski
- #6 October 2005 – Confetti Lamps – Troy Bledsoe
- #7 November 2005 – Partial Tool Control – Nick Cook
- #8 January 2006 – Cutting Segments for Polychromatic Work – Don Russell
- #9 March 2006 – From Log to Bowl – Frank Bowers
- #10 April 2006 – Making Cutting Tools – Using Texturing Tool on Shallow Bowl & Goblet – Joe Getty
- #11 July 2006 – Confetti Light and Pocket Mirror – Mike Hare
- #12 October 2006 – Basic Bowl – Frank Bowers
- #13 February 2007 – Cowboy Hat – Pat Johnson
- #14 May 2007 – Hollow Form – Frank Bowers
- #15 September 2007 – Multi Axis Turning – Don Heath
- #16 October 2007 - Segmented Turning – Don Russell
- #17 May 2008 – Hollowing From the Bottom – Wes Jones
- #18 June 2008 – Texture and Spiral – Frank Bowers
- #19 July 2008 -- Triangle Winged Bowl / Offset Bottom Bowl – Bruce Bell
- #20 August 2008 – Lidded Box – Dan Tull
- #21 September 2008 – Platters – Fred Morris
- #22 June 2009 – Platter with Chatter Tool – Joe Gettys
- #23 July 2009 – Dyes and Glazes – Matthew Hill
- #24 August 2009 – Cremation Urns – Clark McMillan
- #25 September 2009 – Beehive Box – Rebecca Quattlebaum
- #26 October 2009 – Square Bowl – Jack Morse
- #27 November 2009 – Natural Edge Burl Vase – Mark Sillay
- #28 January 2010 – Skew – Alan Lacer
- #29 February 2010 – Sphere – Marty Libman
- #30 May 2010 – Vase from Log Section – Rudy Lopez
- #31 June 2010 – Pens – Robert Johnson
- #32 September 2010 – Lathes, Tools, & Projects – Nick Cook
- #33 October 2010 – Different Ways to Look at Wood – Gary Gardner
- #34 November 2010 – Banksia Pod Teapost – David Datweiler
- #35 February 2011 – Router – Cliff Lownesbury
- #36 March 2011 – Pyrography and Turning a Bowl – Mike and Cynthia Gibson
- #37 April 2011 – Offset Turning – Frank Penta
- #38 May 2011 – Winged Box – Jimmy Clewes
- #39 June 2011 – Poly Resin – Rich Aldrich
- #40 July 2011 – Scrap Wood Boxes – Mark St. Leger
- #41 September 2011 – Hollow Form Inserts, Natural Edge Bowl – 2 out of 3 Amigos
- #47 October 2011 – Beall Buff – Wes Jones
- #48 January 2012 – Blockwork Candles – Alan Leland
- #49 March 2012 – Hollow Form – Frank Bowers
- #50 April 2012 – Small Hollow Form – Joe Gettys
- #51 May 2012 – Small Bowls with Metal Leaf – Leon Thomas
- #52 June 2012 – Unique Methods for Bowls – Turk Alliston

- #53 July 2012 – Spindle Turning – Ashley Harwood
- #54 August 2012 – Canes – Jeff Roberts
- #55 September 2012 – Coloring Techniques – Bradley McAllister
- #56 October 2012 – Fundamentals – Ed Lewis
- #57 November 2012 – Coloring Techniques – Steve Prichard
- #58 January 2015 – Tool Control – Mark Sillay
- #59 March 2015 – Bowls with Carved Feet – Richard Morris
- #60 May 2015 – Projects – Robert Lyons
- #61 June 2015 – Long Stem Goblet – Jim Creel
- #63 August 2015 – Hollow Form – John Jordan
- #64 September 2015 – Lidded Box / Natural Edge Bowl – Frank Bowers
- #65 September 2015 – Wall Art / Platter – Nick Agar
- #66 October 2015 – Basket Illusion – Harvey Meyer
- #67 November 2015 – Cold Bend Hardwood – Tania Radda
- #68 February 2016 – Purse Box – Walt Wager
- #69 March 2016 – Offset Turning – Barbara Dill

Woodturning Resources

-Tools and Supplies-

[Bear Tooth Wood](#)

Specialty pen kits

[Best Wood Tools](#)

Specialized Woodturning Tools

[Craft Supply](#)

Woodturning Supplies

[Craft ID](#)

Signature Medallions

[Earth's Watch](#)

Wooden jewelry and watches

[Franck Johannesen](#)

Woodturning

[Geiger's Solutions](#)

Robust lathes and accessories

[Hartville Tool](#)

15% discount for GAW members

[Highland Woodworking](#)

Woodworking tools and supplies

[Hunter Tool Systems](#)

Carbide woodturning tools

[Hut Products](#)

Woodworking tools and supplies

[John Jordan Woodturning](#)

Woodworking tools and more

[JT Turning Tools](#)

Woodworking tools and accessories

[Klingspoor](#)

Abrasives and woodturning supplies

[Lyle Jamieson Tools](#)

Hollowing tools

[One Way Manufacturing](#)

Lathes and accessories

[Packard](#)

Woodturning supplies

[Peachtree Woodworking Supply](#)

Turning and carving tools, supplies

[Penn State](#)

Woodworking tools and supplies

[Rockler](#)

Woodworking and Hardware

[Ron Brown's Best](#)

Woodturning tools and Videos

[Sanding Glove](#)

Abrasives and sanding equipment

[SS Niles Bottle Stoppers](#)

Stainless steel bottle stoppers

[Thompson Lathe Tools](#)

High quality steel woodturning tools

[Vinces WoodNWonders](#)

Sanding products

[Woodcraft of Atlanta](#)

Woodworking and hardware

[Woodturners Wonders](#)

Lathe lamps and CBN wheels

[Woodturningz](#)

Pen kits and woodturning supplies

-Magazines-

[More Woodturning](#)

Online woodturning magazine

[Wood Magazine Forum](#)

Q&A on woodturning

-Websites-

[Woodturning Videos](#)

Excellent woodturning videos

[Woodturning](#)

Woodworker's Institute

-Wood Sources-

[Australian Burls](#)

Burls from Australia

[Bell Forest](#)

Figured and exotic woods

[Big Monk Lumber](#)

Exotic woods

[Century Tree Turnings](#)

Woodturning blanks

[Got Wood?](#)

Source of wood turning blanks from Piedmont area of South Georgia

[Hardwoods Incorporated](#)

Specialty hardwoods

[Two Tree Boyz Wood](#)

Selling locally harvested green wood. Contact Elizabeth Ross at twotreeboyz@yahoo.com

Hartville Tool Discount Program

The Hartville Tool discount program, which is available to GAW members, offers club members a 15% discount on thousands of woodworking items (some restrictions apply). If you haven't already signed up, and you wish to participate in this program, you may sign up by sending your name, address, and email to gawoodturners@gawoodturner.org and state that you wish to be added to the Hartville list.

Members Items For Sale or Needed

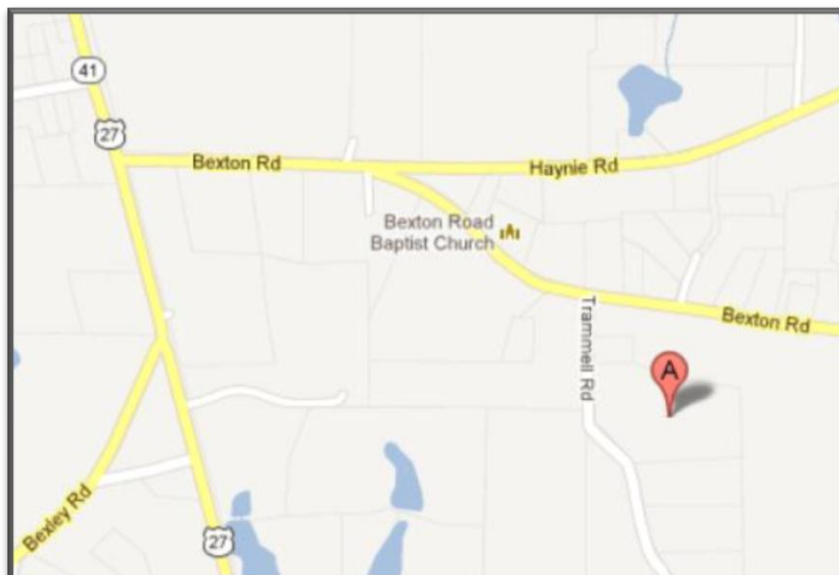
If you have any items you wish to sell within the club, send the information to the newsletter editor (mikeraftis@yahoo.com) and I will insert the item in the next issue.

The following items are for sale via James McEachern. A table saw, a radial arm saw, drill press, and a lathe. Asking price is \$300 for the lot. Contact James at 404-598-9941 or 770-301-3484 for more details.

John Beatty's Shop is our current meeting place. John's address is:

104 Trammell Rd.,
Moreland, GA
Phone 770 -328-0883

Lots of parking is available, but please leave the spaces nearest the shop for those with mobility issues. Be courteous and considerate.



South Metro Woodturners Officers for 2015

President	Wayne Morris	770-331-5863	jwayno40@gmail.com
Vice President	Lamar Smith	770-253-3060	grandman@numail.org
Treasurer	Don Heath	678-410-7219	md4heath@bellsouth.net
Secretary	Mike Raffis	770-598-3552	mikeraftis@yahoo.com
Past President	Roger Hendrickson	404-418-6255	rogerh845@charter.net
Program Comm.	Roger Hendrickson	404-418-6255	rogerh845@charter.net
Member Rep.	John Von Eschenbach	404-702-8739	johnvone@bellsouth.net
Newsletter Ed.	Mike Raffis	770-598-3552	mikeraftis@yahoo.com

Woodturning Links

Woodturning/Woodworking Associations and Clubs

[American Association of Woodturners](#)

[Apple Ridge Woodturners](#)

[Barnesville Woodturners](#)

[Bi-City Woodturners](#)

[Georgia Association of Woodturners](#)

[Gwinnett Woodworkers Association](#)

Low Country Turners
- Tom Gattis - 912-898-5970

Mountain Laurel Woodturners
- John Moss 706-754-5679

[Peach State Woodturners](#)

[South Metro Woodturners](#)

[Woodworkers Guild of Georgia](#)

Supplies and Information

[Craft Supply](#)

Woodturning Supplies
800-551-8876

[Don Geiger](#)

Wheel Truing & Dressing System

[Got Wood?](#)

Wood Turning Supplies

[Hardwoods Incorporated](#)

Specialty Hardwoods
800-964-7804

[Highland Woodworking](#)

Woodworking tools, supplies
800-241-6748

[Hut Products](#)

800-547-5461

[Klingspor](#)

800-228-0000

[Lee Tree Woodworks](#)

8411 Tatum Rd, Palmetto, GA 30268
Exotic wood Source
678-378-0963

[Packard](#)

800-683-8876

[Penn State](#)

800-377-7297

[Rockler](#)

Woodworking and Hardware
800-279-4441

[Woodcraft](#)

800-225-1153

[Wood Magazine Forum](#)

Q & A on Woodturning

[South Florida Woodworking Guild](#)

[The Woodyard](#)

Lumber, sheet goods, turning stock
122 Main Street, Concord, GA
770-468-8588

2017 Demonstrators and Meeting Programs

January:	Mike Sorge	February:	Wayne Morris
March:	Frank Bowers	April:	Jamie Donaldson
May:	Dick Gerard	June:	Chain Saw Demo
July:	James McClure	August:	Ed Loftstrom
September:	Glenn Lucas	October:	Toni Ransfield
November:	TBD	December:	Christmas Party

Specific projects for each demonstrator will be announced.

Woodturning Schools and Classes

John C. Campbell Folk School

800-FOLK SCH, Brasstown, NC

Arrowmont School of Arts & Crafts

865-436-5860
Gatlinburg, TN

Highland Woodworking

800-241-6748
Atlanta, GA

Appalachian Center for Crafts

931-372-3051

Dogwood Institute School of Fine Woodworking

770-751-9571

Woodcraft

800-225-1153
Roswell, GA

Private Instruction

The following local turners give private woodturning instruction in their own shops. Contact them for more information.

Frank Bowers

fcbowrs@aol.com
404-292-1107

Nick Cook

nickcook@earthlink.net
770-421-1212

Peggy Schmid

schmidgodfrey@bellsouth.net
678-947-4562

Mark Sillay

marksillay@me.com
404-556-1736

Phil Colson

pcolson@mindspring.com
404-518-4925
404-292-1107

Wes Jones

wwjones@comcast.net
770 972-6803

This Safety Information and Safe Lathe Speed Chart is repeated because it is so important and our fellow turners keep getting hurt. A safe RPM Chart to post on your lathe is available. -ed

Safe Use of the Woodturning Lathe

By Paul Hannaby

While turning wood, you are unavoidably in close proximity to a rotating machine attached to a piece of wood. This poses a number of hazards, but these can be minimized with a common sense approach.

- Make sure the wood is securely held for the task in hand.
- Never leave a chuck key in the chuck. If the lathe starts up it becomes a missile!
- If your lathe has forward and reverse, make sure the chuck, faceplate etc. is secured with a locking screw to prevent it from unscrewing if you use the lathe in reverse for sanding.
- Check your speed - When you mount a fresh piece of wood on the lathe, make sure the lathe speed is slow enough so the lathe won't vibrate dangerously.
- Position the tool rest close enough to the workpiece to provide adequate support.
- Before you turn on, rotate the workpiece by hand to ensure it does not catch on the tool rest.
- Don't balance tools on your lathe that might fall off and injure you. Keep them in a rack and use just the one in your hand.
- Keep your fingers away from the rotating wood and don't hang your fingers over the tool rest.
- Wherever possible, don't stand directly in line with the rotating wood so if it comes loose, or if part of it breaks off, you aren't in the firing line. As a minimum, stand out of the way when you first start the lathe and bring it up to working speed.
- If you are turning pieces of wood with glue joints, ensure the joint is secure and use a lower lathe speed as a precaution.
- If you use cyanoacrylate (CA) glue, commonly known as "superglue," for crack / gap filling, make sure the glue is dry before turning the lathe on. Sometimes a surface skin can form but the glue beneath can still be liquid. Once it sticks to your visor, it is virtually impossible to remove cleanly. You were wearing a visor - weren't you?
- When sanding, don't wrap the abrasive around your fingers and use with your fingers trailing the direction of rotation.
- Never use woven cloth rags for polishing on the lathe. There are safety cloths available, which are made from unwoven paper. These are designed to allow tearing if the cloth should catch.
- For more Safety info from Paul Hannaby, see the [Wood Turning On-line](#) web site

Safe Lathe Speeds

Dia.	RPM Range
1	6000 - 9000
2	3000 - 4500
3	2000 - 3000
4	1500 - 2250
5	1200 - 1800
6	1000 - 1500
7	857 - 1286
8	750 - 1125
9	667 - 1000
10	600 - 900
11	545 - 818
12	500 - 750
13	462 - 692
14	429 - 643
15	400 - 600
16	375 - 563
17	353 - 529
18	333 - 500
19	316 - 474
20	300 - 450