



South Metro Woodturners Newnan, GA



Chapter 215 of the American Association of Woodturners

<http://www.southmetrowoodturners.com>

September 15 & 22, 2015

Editor: Mike Raftis

mikeraftis@yahoo.com

President's Message

Demonstrator Tuesday will be Harvey Meyer with his Basket Illusion process. Pay attention and schedule a significant block of time so you can complete one yourself.

Since I have only received offers of a couple of possible items for the Woodtober Fest next week, I can't justify going ahead with this project at this time. Maybe over the next year, we can plan and put together the elements for this event to make this a successful venture for the club as it relates to the tool sale.

Next month will be our election of officers for next year, and the ballot is:

President	Roger Hendrickson
Vice Pres.	Lamar Smith
Treasurer	Wayne Morris
Secretary	Mike Raftis

The floor will be open for additional candidates and all are welcome to enter the fray, there will be no debates scheduled, however, so what you see is what you will get.

Hope you are turning ornaments to bring this meeting and next as we need 200 to distribute to the Children's Home and Christian City Hospice.

Make your plans now for the **Christmas Party, December 15th**. The \$15 per couple covers the rental of the facility, and the main entrée for our meal. The sides and desserts will be our responsibility and we will pass around lists next meeting so we can insure some variety of offerings, and, in that light, there may be some members

or wives who might have special concerns, i.e., gluten free, so I will try to put that on the lists.

We still have not had anyone step up and offer to take on the position of Program Chair. This is probably the most critical position and one that is a must to keep the quality of demonstrators at the level we have enjoyed, and we can share the responsibilities of the position across more than one individual.

September 15 Notes

We are looking for around 200 ornaments this year. George Blankenship suggested that we make a few tops that are fitted with eyelets. That way the kids could have an ornament as well as a new toy. This seemed a good idea to the membership. As before, for every ten ornaments you make, you will receive a ticket for a drawing for a \$50 gift certificate. The drawing will be held at the Christmas party.

Regarding the Christmas Party, we have December 15 reserved at the Woodstream Clubhouse.

We are looking for increased contributions to the monthly raffle. Roger suggests that members donate any projects that they have in progress, but for some reason don't plan to complete.

The October pre-meeting get together will be at Big Joe's Bar & Grill (1329 Highway 34E, Newnan at 5:00. The location is next to Captain D's.)

This month's demonstrator, Jimmy Clewes, was sick at home in

Las Vegas so Frank Bowers came in to do a project for us. Frank turned a shallow bowl in imitation of what we thought Jimmy Clewes would do.

Visitors: Gary Phillips came with Phil Petrowski and Jack Watts came with Dan Tull.

There was no raffle 'cause Wayne Morris is on vacation in Europe and no one else knows where the raffle tickets are.

Ron Britton is (again) asking for someone to step forward to take

Next Meeting

- Our next meeting will be **October 20** at **John Beatty's shop**. Map attached.
- The **October** demonstrator will be **Harvey Meyer**. View his gallery at www.harveymeyer.com
- If you have an interest in a particular demonstration topic, or you have a skill or special technique you could share with the club contact **Ron Britton**. Members will be compensated \$50 for demonstrating.

Newsletter Contents

- [Member's Work](#)
- [Demonstrator](#)
- [Links](#)
- [Schools](#)

Use the newsletter to communicate with your fellow members

Share your shop photos, 'sale' items, tool tips or anything else you would like to with our club members.

on the “Program Chair” job and begin learning how to do it. Duties do involve coordinating demos with GAW.

September 22 Notes

(Some of these may be familiar from the previous week.)

Roger reminded us that the Christmas ornaments need to be completed by next meeting (October 20). We would like to have 200 of them – ten or so from each member would get us past that goal. For every 10 ornaments you make will get you a ticket for a drawing for a \$50 gift certificate at the Christmas party.

Also, a replacement (trainee) is needed for Ron Britton to be demonstration coordinator. (This isn’t going to go away until one is found.)

I have a little extra space here, so I thought I would include a picture I came across recently. This is what I would consider a fairly ambitious turning project. (I can’t guarantee that it’s real.) –Ed.





Maple Burl Bowl by
George Blankenship



Birdhouse by **George Blankenship**.



Cherry bowl by
Larry Nation.



Small Box by **Dan Tull.**



Walnut Beads of Courage box by **Jeff Roberts**

Demonstrator for September 15

Frank Bowers

Note: The September 15 demonstrator was to be Jimmy Clewes. Unfortunately Jimmy was taken ill, and was unable to make it to the meeting. Our own **Frank Bowers** was kind enough to fill in and demonstrated a lidded bowl and a natural edge bowl for the club.





Demonstrator for September 22

Nick Agar



For this demonstration Nick turned a wall hanging and decorated a platter with an air brushed leaf motif.

Wall hangings can be made from off-cut pieces, and have proven to be more profitable than 'table' work likely because there is much less competition for these items.

Wall Hanging

The wall hanging involves a lot of off center turning. The ambrosia maple blank was glued to an MDF backer board. A large faceplate is recommended as this will provide more stability. Also, don't be afraid to use several screws: the fairly large blank will be considerably off center in this project. Also, a slow (300 RPM) speed is recommended. A variable speed lathe is recommended for off center turning. For safety, an underhand grip is recommended.

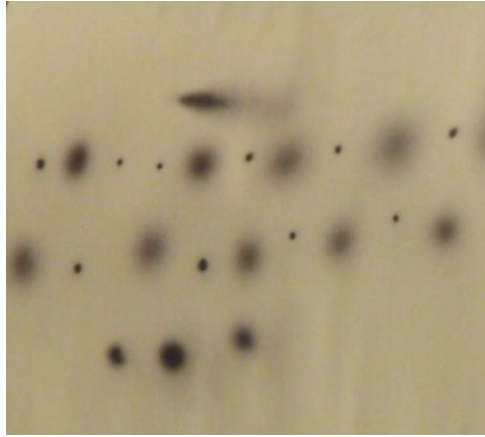


Using 'V' cuts for the circles helps reduce tearout where the circles intersect. Nick doesn't 'face-off' the piece. A little unevenness can add visual interest to the piece. If your blank has a cove warp, flatten off the concave side a little (to add stability) and then use the convex side for your work.



Texturing is accomplished with a Sorby spiralling tool and/or an embossed punch. Nick also pointed out that the brass button on the heel of some turning tools is a good burnishing tool.





The spray pattern of an air brush sprayer is highly dependent on the distance of the nozzle from the work. Practice the technique varying the nozzle distance. Moving closer yields a smaller pattern, and moving farther away gives a larger pattern. Learn to draw lines the taper to a point at their ends.



Coloring is applied with an air brush or a 'mouth spray' diffuser. The diffuser is much coarser than the air brush, and provides interesting effects. Finish should always be layered slowly to avoid runs.



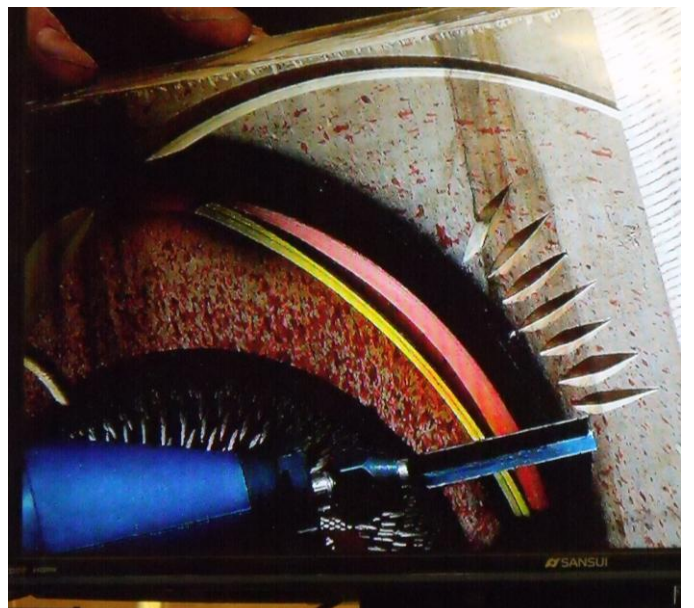
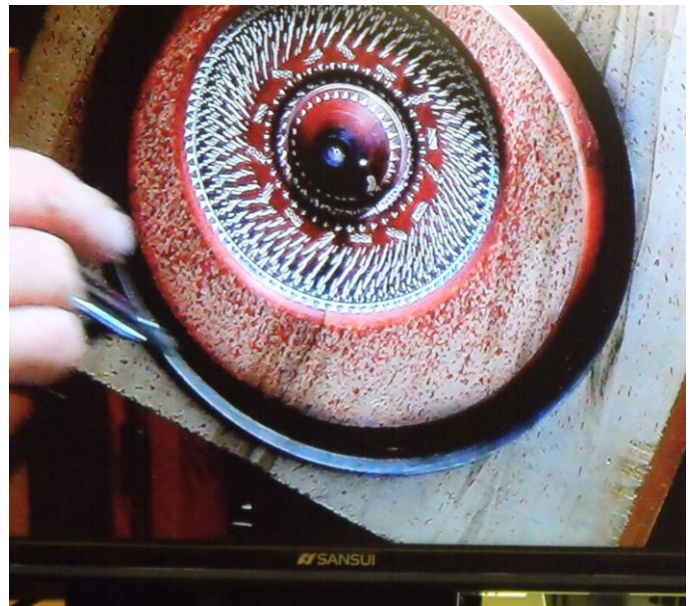
White liming wax is used as a filler in the embossed patterns.

Coloring can be done with Artisan or Trans-Tint dyes. The Harbor Freight air brush kit works well, and is modestly priced (HF 0.35 air brush). 30 psi is adequate pressure for the air brush, and you should have a dryer in the air line.



After completing the first pattern, shift your faceplate (1/2" or less) and remount. If you note that the glue holding the work looks like it might be separating, heat it and remount it: Don't just add more glue. Ensure that the tool rest height remains on center for different cuts.

A little tape on the tool rest can be used a reference stop for the tool.



Do a little carving and detailing. Paint over the carving to fill it in.

Sand off the surface, and accent the edge.



The Platter

Decorating the platter with leaf forms is an exercise in airbrushing in stencil patterns. The stencil material is available wherever auto painting supplies are available. It is a flexible material that will adhere to your work.

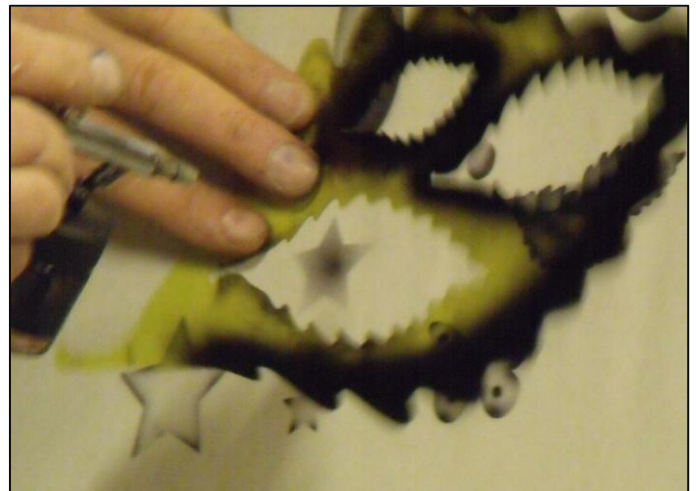


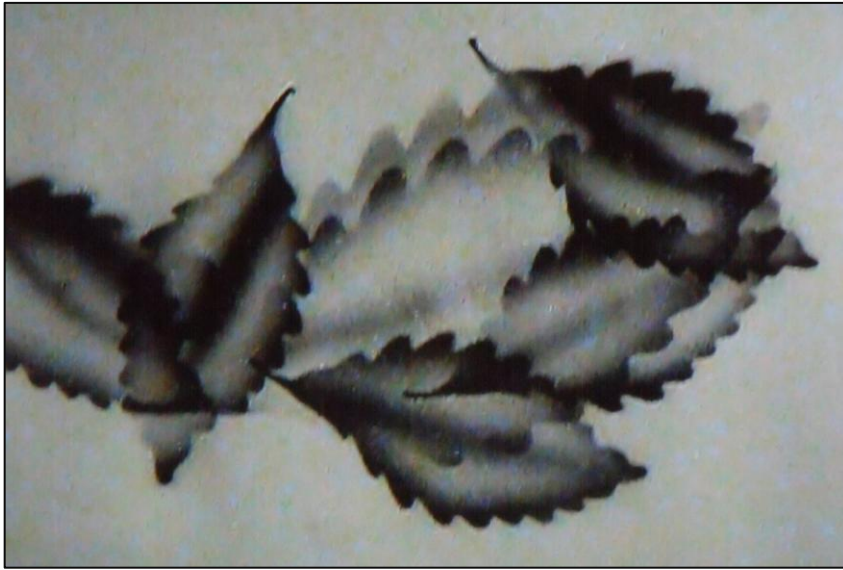
spray towards the edge – this helps reduce overspray.

Frog tape is a good choice for masking off areas where you don't want the paint.

You create your patterns by drawing around a desired shape (leaf) onto the stencil material, and then cutting it out with an x-acto knife.

When filling in the pattern, start from inside and



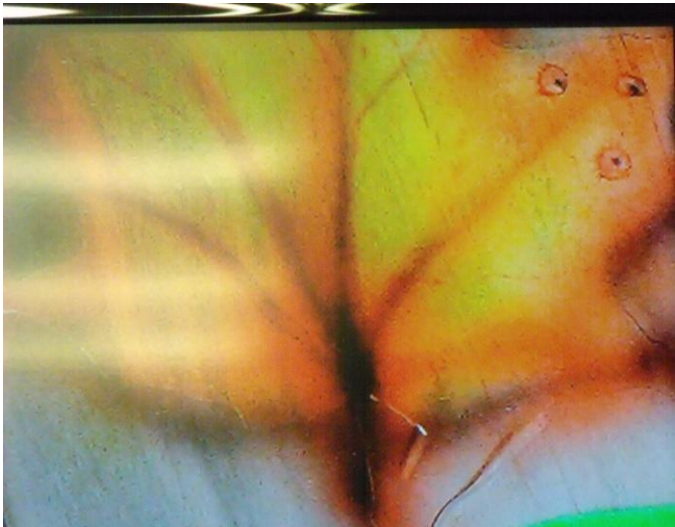
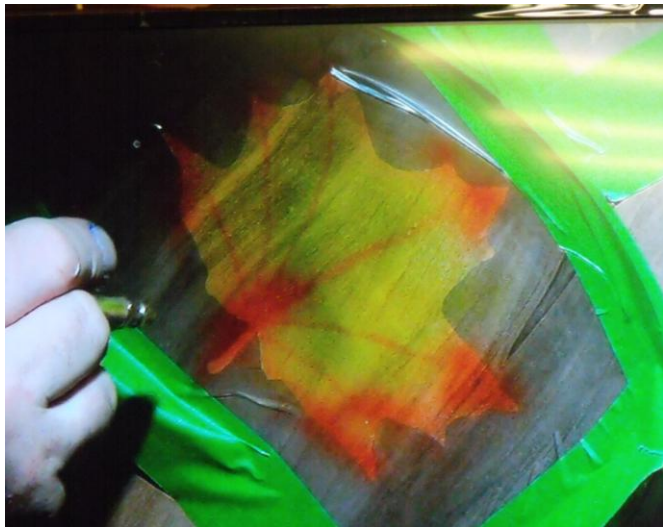


Paint in light coats, and you can mix colors to get additional colors.

Don't worry about little spatters that may occur. Leaves that are changing colors also have little 'spatter' dots in them.

When positioning your designs, allowing the shape to go over edges creates a nice effect. Also, use several different patterns, unless you want a special effect using all of one design.






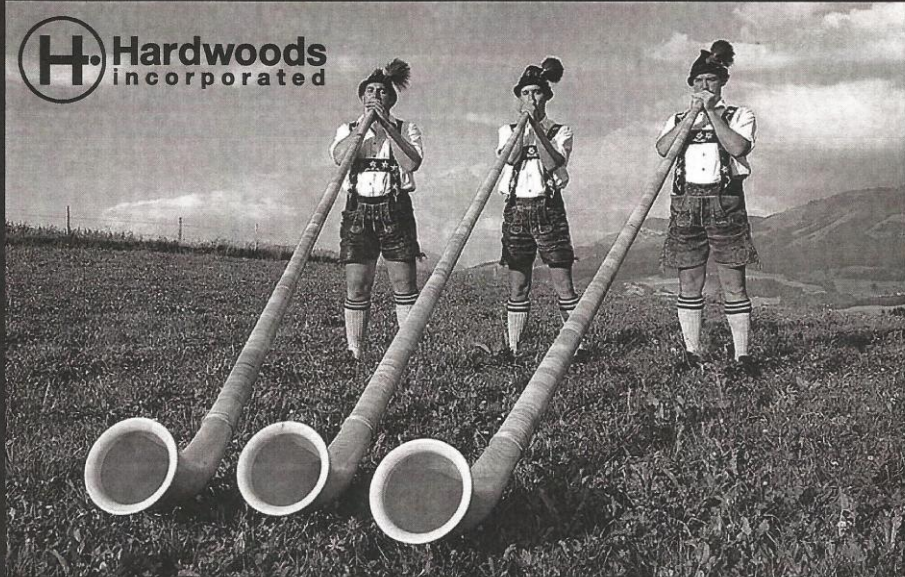


Use care when removing tape and stencil material to avoid lifting wood fibers.



SAVE THE DATE

 **Hardwoods**
incorporated



Woodtoberfest
Saturday, October 24, 2015

3RD ANNUAL
Woodtoberfest

MARK YOUR CALENDAR!
SATURDAY, OCTOBER 24, 2015 ■ 8AM - 2PM



Follow us on Facebook for additional details as they become available.
[facebook.com/HardwoodsIncorporated](https://www.facebook.com/HardwoodsIncorporated)

Hardwoods Incorporated ■ 5400 Riverview Road ■ Mableton, Georgia 30126
T 800.964.7804 ■ P 404.214.4745 ■ F 404.799.2079
www.hardwoodweb.com

Members Items for Sale

If you have any items you wish to sell within the club, send the information to the newsletter editor (mikeraftis@yahoo.com) and I will insert the item in the next issue.

Lathe for Sale

Bobby Cumbie has a Delta 46-460 - 12 1/2" Midi Lathe, 1 hp. variable speed, 3 pulley position, forward and reverse, 24 position indexing with stand. 3 years old. \$ 400.00

Bobby Cumbie

678-576-3910

Chuck for Sale

Bobby Cumbie has for sale an Apprentice chuck (1"-8tpi direct thread) complete set.

678-576-3910

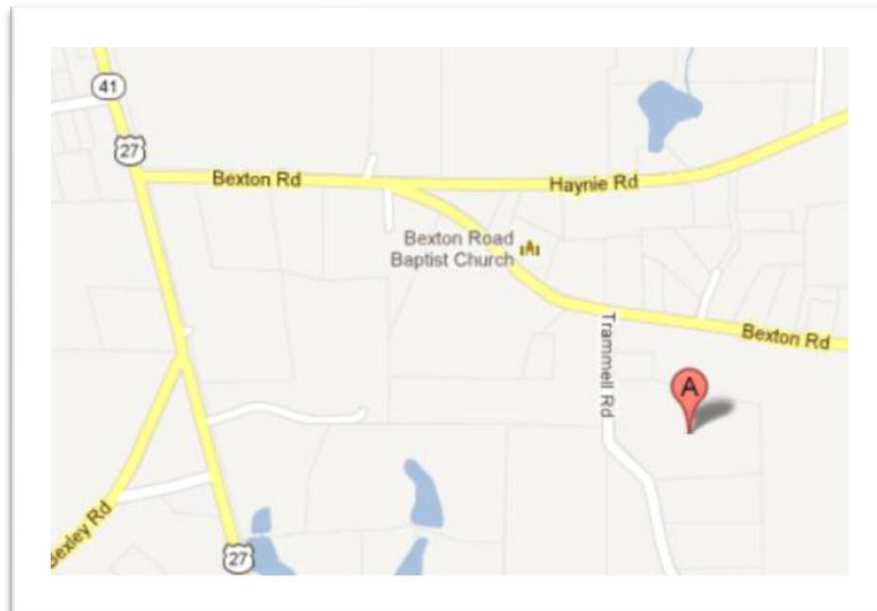
Members Items Needed

If you have any items or tools that you wish to purchase from a club member, send the information to the newsletter editor (mikeraftis@yahoo.com) and I will insert the information in the next issue.

John Beaty's shop is our current meeting place. John's address is:

104 Trammell Rd.,
Moreland, GA
Phone 770 -328-0883

Lots of parking is available, but please leave the spaces nearest the shop for those with mobility issues.
Be courteous and considerate.
Don't tease the dogs!



South Metro Woodturners Officers for 2015

President	Roger Hendrickson	404-418-6255	rogerh845@charter.net
Vice President	George Blankenship	678-360-0585	_grizzlygideon100@hughes.net
Treasurer	Wayne Morris		jwayno49@gmail.com
Secretary	Mike Rafftis	770-598-3552	mikeraftis@yahoo.com
Past President	Don Heath	678-410-7219	md4heath@bellsouth.net
Program Comm.	Ron Britton	770-328-9807	rbritton625@bellsouth.net
Member Rep	John Von Eschenbach	404-702-8739	johnvone@bellsouth.net
Newsletter Ed.	Mike Rafftis	770-598-3552	mikeraftis@yahoo.com

Woodturning Links

Woodturning/Woodworking Associations and Clubs

[American Association of Woodturners](#)

[Apple Ridge Woodturners](#)

[Barnesville Woodturners](#)

[Bi-City Woodturners](#)

[Georgia Association of Woodturners](#)

[Gwinnett Woodworkers Association](#)

Low Country Turners
- Tom Gattis - 912-898-5970

Mountain Laurel Woodturners
- John Moss 706-754-5679

[Peach State Woodturners](#)

[South Metro Woodturners](#)

[Woodworkers Guild of Georgia](#)

Supplies and Information

[Craft Supply](#)

Woodturning Supplies
800-551-8876

[Don Geiger](#)

Wheel Truing & Dressing System

[Got Wood?](#)

Wood Turning Supplies

[Hardwoods Incorporated](#)

Specialty Hardwoods
800-964-7804

[Highland Woodworking](#)

Woodworking tools, supplies
800-241-6748

[Hut Products](#)

800-547-5461

[Klingspor](#)

800-228-0000

[Lee Tree Woodworks](#)

8411 Tatum Rd, Palmetto, GA 30268
Exotic wood Source
678-378-0963

[Packard](#)

800-683-8876

[Penn State](#)

800-377-7297

[Rockler](#)

Woodworking and Hardware
800-279-4441

[Woodcraft](#)

800-225-1153

[Wood Magazine Forum](#)

Q & A on Woodturning

[South Florida Woodworking Guild](#)

[The Woodyard](#)

Lumber, sheet goods, turning stock
122 Main Street, Concord, GA
770-468-8588

2015 Demonstrators and Meeting Programs

February: **Mark Waninger**

April: **Mark Sillay**

June: **Jim Creel**

August: **John Jordan**

October: **Harvey Meyer**

*Special Meeting: \$10 Charge

Specific projects for each demonstrator will be announced.

March: **Richard Morris**

May: **Robert Lyons**

July: **Steve Prichard**

September: **Jimmy Clewes**

September 22* **Nick Agar**

November: **Tania Radda**

Woodturning Schools and Classes

John C. Campbell Folk School

800-FOLK SCH, Brasstown, NC

Arrowmont School of Arts & Crafts

865-436-5860

Gatlinburg, TN

Highland Woodworking

800-241-6748

Atlanta, GA

Appalachian Center for Crafts

931-372-3051

Dogwood Institute School of Fine Woodworking

770-751-9571

Woodcraft

800-225-1153

Roswell, GA

Private Instruction

The following local turners give private woodturning instruction in their own shops. Contact them for more information.

Frank Bowers

fcbowrs@aol.com

404-292-1107

Nick Cook

nickcook@earthlink.net

770-421-1212

Peggy Schmid

schmidgodfrey@bellsouth.net

678-947-4562

Mark Sillay

marksillay@me.com

404-556-1736

Phil Colson

pcolson@mindspring.com

404-518-4925

404-292-1107

Wes Jones

wwjones@comcast.net

770 972-6803

This Safety Information and Safe Lathe Speed Chart is repeated because it is so important and our fellow turners keep getting hurt. A safe RPM Chart to post on your lathe is available. -ed

Safe Use of the Woodturning Lathe

By Paul Hannaby

While turning wood, you are unavoidably in close proximity to a rotating machine attached to a piece of wood. This poses a number of hazards, but these can be minimized with a common sense approach.

- Make sure the wood is securely held for the task in hand.
- Never leave a chuck key in the chuck. If the lathe starts up it becomes a missile!
- If your lathe has forward and reverse, make sure the chuck, faceplate etc. is secured with a locking screw to prevent it from unscrewing if you use the lathe in reverse for sanding.
- Check your speed - When you mount a fresh piece of wood on the lathe, make sure the lathe speed is slow enough so the lathe won't vibrate dangerously.
- Position the tool rest close enough to the workpiece to provide adequate support.
- Before you turn on, rotate the workpiece by hand to ensure it does not catch on the tool rest.
- Don't balance tools on your lathe that might fall off and injure you. Keep them in a rack and use just the one in your hand.
- Keep your fingers away from the rotating wood and don't hang your fingers over the tool rest.
- Wherever possible, don't stand directly in line with the rotating wood so if it comes loose, or if part of it breaks off, you aren't in the firing line. As a minimum, stand out of the way when you first start the lathe and bring it up to working speed.
- If you are turning pieces of wood with glue joints, ensure the joint is secure and use a lower lathe speed as a precaution.
- If you use cyanoacrylate (CA) glue, commonly known as "superglue," for crack / gap filling, make sure the glue is dry before turning the lathe on. Sometimes a surface skin can form but the glue beneath can still be liquid. Once it sticks to your visor, it is virtually impossible to remove cleanly. You were wearing a visor - weren't you?
- When sanding, don't wrap the abrasive around your fingers and use with your fingers trailing the direction of rotation.
- Never use woven cloth rags for polishing on the lathe. There are safety cloths available, which are made from unwoven paper. These are designed to allow tearing if the cloth should catch.
- For more Safety info from Paul Hannaby, see the [Wood Turning On-line](#) web site.

Safe Lathe Speeds

Dia.	RPM Range
1	6000 - 9000
2	3000 - 4500
3	2000 - 3000
4	1500 - 2250
5	1200 - 1800
6	1000 - 1500
7	857 - 1286
8	750 - 1125
9	667 - 1000
10	600 - 900
11	545 - 818
12	500 - 750
13	462 - 692
14	429 - 643
15	400 - 600
16	375 - 563
17	353 - 529
18	333 - 500
19	316 - 474
20	300 - 450

